

# DATA SHEET

## “EXCLUSIVE“ STAINLESS ACCESS PANEL



R-060622-OZ/VO-[V]-A0

### BASIC INFORMATION

**EXCLUSIVE stainless steel access panels** combine two high quality materials. The visible part of the panel – the frame and the panel itself – is made of high quality, brushed stainless food-grade steel. The mounting frame is made of high-quality ASA styrene polymer. Both of these materials are weather resistant, making the panel a suitable choice for both exterior and interior applications.

**EXCLUSIVE stainless steel access panels** are equipped with an opening mechanism. Its latches open when any plastic card the size of an ID card is inserted, opening the panel on its hinges. No screwdriver or special key is required.

**EXCLUSIVE stainless steel access panels** are suitable as an aesthetically pleasing cover for various inspection features such as water or gas valves or as an inspection opening access panel under bathtubs or sinks.

**EXCLUSIVE stainless steel access panels** are available in the following dimensions: 200x200, 200x300, 300x300 and 400x400 mm. The panels have a laser-coated protective grey layer to prevent damage during handling and mounting operations.



### FEATURES AND BENEFITS

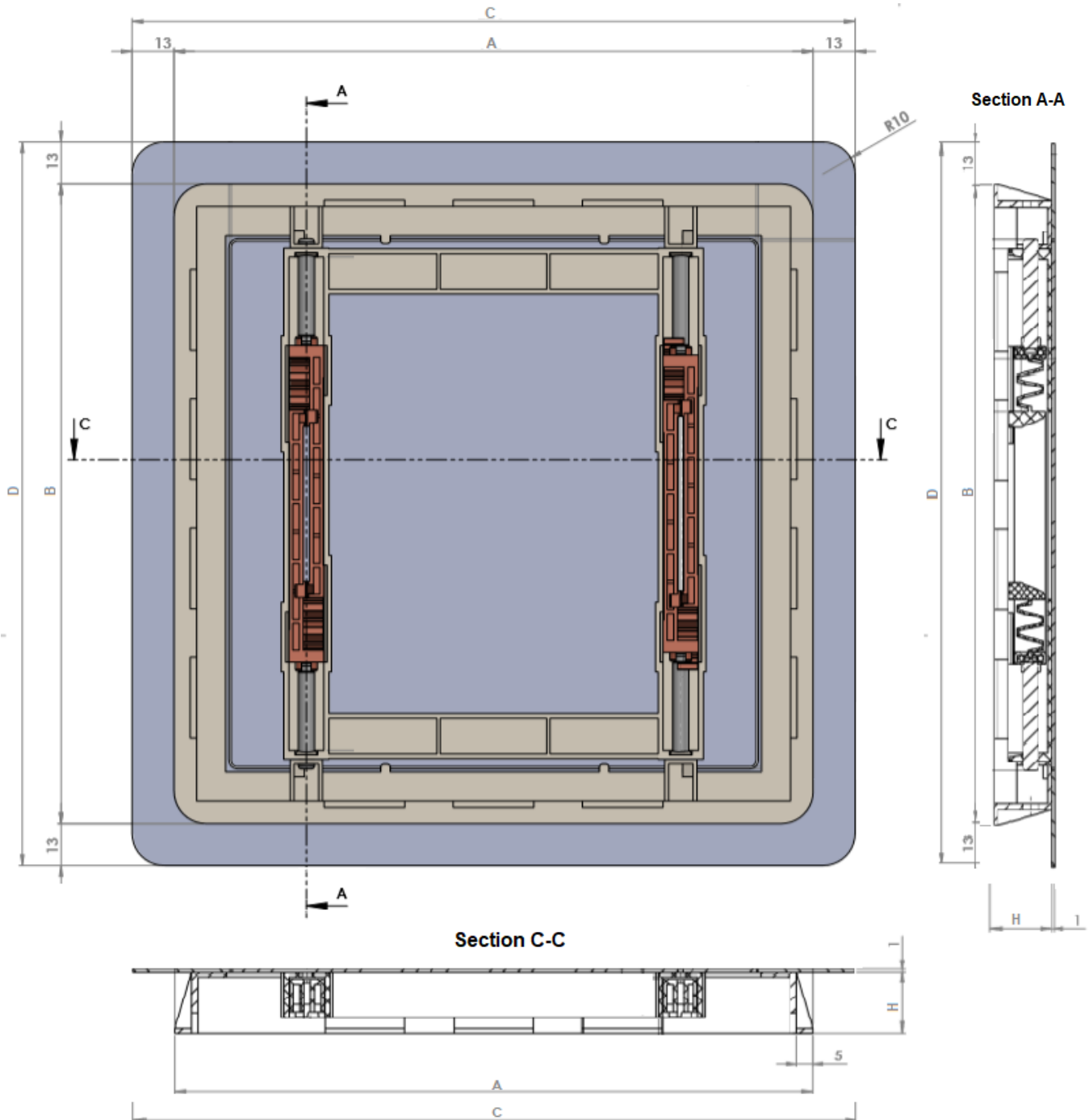
- Minimalist design
- Quality workmanship for a long life span
- Weather-resistant
- Minimal outward protrusion (only 1 mm),
- Smart Euro-card opening system
- Simple installation and easy maintenance
- The panel does not interfere with the surrounding design features
- Patent-protected – UV CZ30936, PCT/CZ2017/000071, RCD No.004515237.

Odp - zpracoval:	Ladislav Chloupek	Spr - schválil:	Jan Hájek	Datum:	
Podpis:		Podpis:		Strana / Počet stran:	1/3

# DATA SHEET "EXCLUSIVE" STAINLESS ACCESS PANEL



R-060622-OZ/VO-[V]-A0



Název	Objednávkové číslo	Rozměry (mm)				
		A	B	C	D	H
NDE 200x200	0163	198	198	224	224	20
NDE 200x300	0162	198	298	224	324	20
NDE 300x300	0161	298	298	324	324	20
NDE 400x400	0166	398	398	424	424	20

<b>Nominal sheet steel thickness</b>	1 mm
--------------------------------------	------

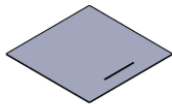
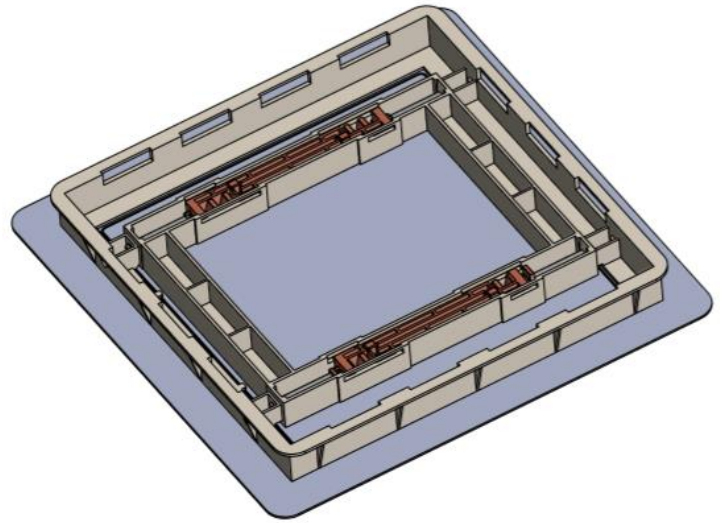
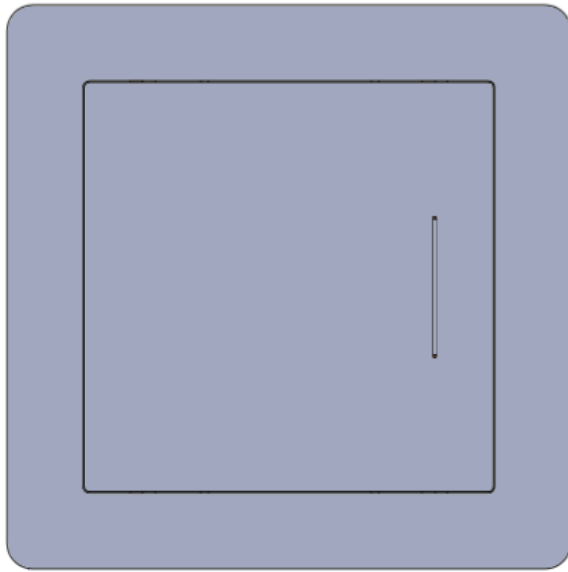
Odp - zpracoval:	Ladislav Chloupek	Spr - schválil:	Jan Hájek	Datum:	
Podpis:		Podpis:		Strana / Počet stran:	2/3

# DATA SHEET

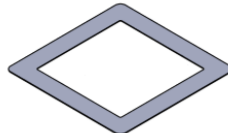
## "EXCLUSIVE" STAINLESS ACCESS PANEL



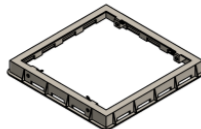
R-060622-OZ/VO-[V]-A0



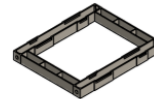
**Panel leaf**  
Stainless steel  
DIN 1.4301 (AISI 304)



**Outer frame**  
Stainless steel  
DIN 1.4301 (AISI 304)



**Mounting frame**  
Styrene polymer ASA



**Frame with opening mechanism**  
Styrene polymer ASA



**Opening mechanism**  
Semi-crystalline thermoplastic POM

For detailed information go to [www.haco.cz](http://www.haco.cz).

Odp - zpracoval:	Ladislav Chloupek	Spr - schválil:	Jan Hájek	Datum:	
Podpis:		Podpis:		Strana / Počet stran:	3/3